

# Deltek Open Plan™

## Powerful Enterprise Planning and Scheduling

### Deltek Open Plan Helps You:

- Analyze performance across a program or projects
- Define project priorities
- Manage resources efficiently across the organization
- Model estimate uncertainty and risk events
- Plan projects quickly and realistically
- Model resource pools and skills
- Closely monitor and control projects from initiation to completion
- Rapidly analyze project status
- Minimize risk within an organization
- Seamlessly integrate with Deltek Cobra and PM Compass

Project delivery is critical to business success. As projects increase in complexity, number, and value, constraints become tighter. The challenge is to successfully manage resources, time, and budget across the enterprise. Today, this challenge falls upon a range of participants including business managers, project managers, and resource managers. These managers require information access and the ability to model that information to maximize performance while minimizing risk.

Deltek Open Plan is an enterprise-class project management solution that offers the power and flexibility to complete medium-to-large and/or multiple projects on time and on budget. With multi-project analysis, critical path planning, resource management and Risk analysis, Open Plan caters to the differing needs of business, resource and project managers.

### The Deltek Open Plan Advantage Support Enterprise-Level Program Management

Balancing limited resources across multiple projects is a challenge for any organization. To achieve this balance, business managers need to review work across the corporate portfolio. They also need to see the instant impact of an individual project's performance on the rest of the program and manage project priorities. Open Plan offers business managers a comprehensive set of tools to enhance decision making and optimize program management.

### Improve Project Planning

In today's fast-paced business environments, project managers need to be able to assimilate information as quickly as possible. Open Plan facilitates fast and realistic planning through rapid data entry, analysis and powerful reporting on project status and progress.

### Improve Schedule Quality

User defined validation rules add another level of scheduling control and maturity, by warning users that entered data does not comply with industry best practice, company policy or requirements from federal agencies like the DCMA. This enhances schedule quality and reduces the amount of re-work required by both clients and agencies after schedules are submitted.

"Open Plan and Cobra provide us with a consistent approach across all phases of the project, including design, development, manufacture, and support... as with any project, problems still occur, but with Open Plan and Cobra, they are identified early on, enabling us to assess the impact and plan for corrective action."

» David Chard, Project Planning Release Manager with BAE Systems

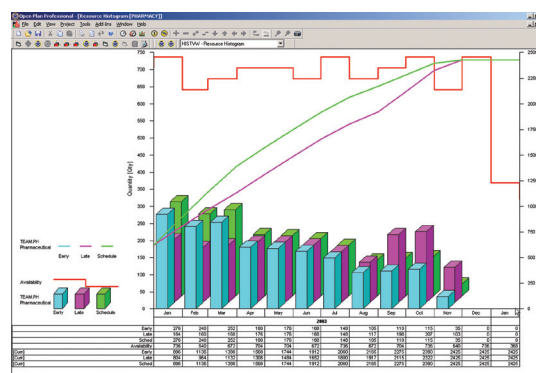
Deltek  
Open Plan  
facilitates fast  
and realistic  
planning  
through rapid  
data entry,  
analysis and  
reporting on  
project status  
and progress.

## Manage Resources

Open Plan prioritizes projects, ensuring that resource allocation reflects an organization's overall business objectives. For maximum efficiency, resource managers can create and share Resource Breakdown Structures across the enterprise. Resources can be allocated manually, according to skill and availability. Alternatively, Open Plan can automatically present solutions that take into account target dates and resource usage across multiple projects.

## Leverage Existing Systems and Processes

Open Plan's architecture facilitates integration with other corporate systems making it easier to share information across the enterprise. Data can also be shared with desktop planning tools such as Microsoft® Project, providing an enterprise wide roll-up and reporting view. Customizable WebWindows allow Open Plan's reporting capabilities to be extended to integrate data from other systems such as Deltek Costpoint®, Oracle® Projects, or SAP®.



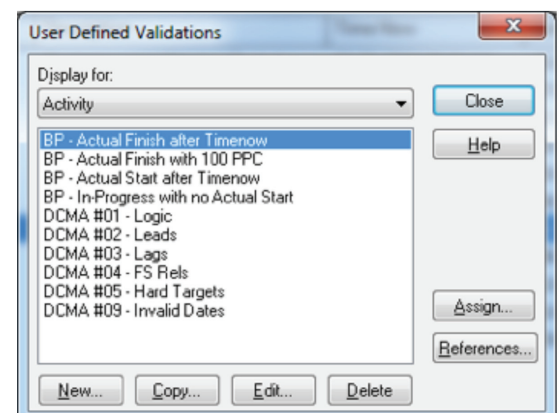
**Figure 1:** Hours/Cost Reporting

## Key Features and Benefits

Deltek Open Plan provides a multitude of features for faster data analysis and stronger business performance, including:

- **Project Planning** — Better manage and plan initial project schedules, budgets and ongoing status updates with change management through rapid data entry, analysis and reporting.
- **Risk Management** – Model estimate uncertainty and the potential impact of risk events using Monte Carlo simulation (Schedule Risk Assessment).
- **Cost and Earned Value Management** – Create and manage cost against a Program Management Baseline using comprehensive cost classes and Performance Measurement Techniques. Capture simplified status (0-100, 50-50 etc.) for easy integration with cost management systems, such as Deltek Cobra.
- **Critical Path Method** – Quickly and effectively model complex project logic scenarios including constraints/relationships at any level of the project or inter-project hierarchy.
- **User Defined Business Rules** – Prevent scheduling problems before they occur by defining business rules such as:
  - Every activity with work must have a WBS
  - An In-Progress activity must have a valid Actual Start

These rule validations can be project specific and will issue warnings when problematic scheduling data is entered.



**Figure 2:** User Defined Business Rules

With Deltek Open Plan, businesses can improve project success, allocate resources across projects more effectively and share project information across the enterprise.

## • Seamless integration with Deltek PM

**Compass** – Provide key team members with direct access to scheduling and data planning through a simplified, work-flow driven interface. Directly integrated with PM Compass (optional), Deltek's Open Plan delivers visibility and control on projects on an even higher, enterprise-wide level. See Deltek PM Compass for more exciting details.

## • Cost Schedule Integration

– Directly integrate with Deltek Cobra to provide rapid sharing of schedules and updates, driving stronger and more accurate cost and performance management.

## • Multi-Project Analysis

– Optimize resources across the entire enterprise with cross-project analysis and reporting, while ensuring that the most important projects have first access to resources through simple, priority-status adjustments

## • Program Scalability

– Eliminate the need for complex technical environments and heavy reliance on IT resources for setup—regardless of plan and schedule complexity. Through ultimate scalability, utilize the solution's simple setup for both standalone and shared environments to significantly reduce overall total cost of ownership (TCO).

## Leverage Your Existing Systems and Processes

Open Plan's open architecture facilitates integration with other corporate systems making it easier to share information across the enterprise. Data can also be shared with desktop planning tools such as Microsoft® Project, providing an enterprise wide roll-up and reporting view. Customizable WebWindows allow Open Plan's reporting capabilities to be extended to integrate data from other systems such as Deltek Cobra™, Deltek Costpoint®, Oracle® Projects, or SAP®.

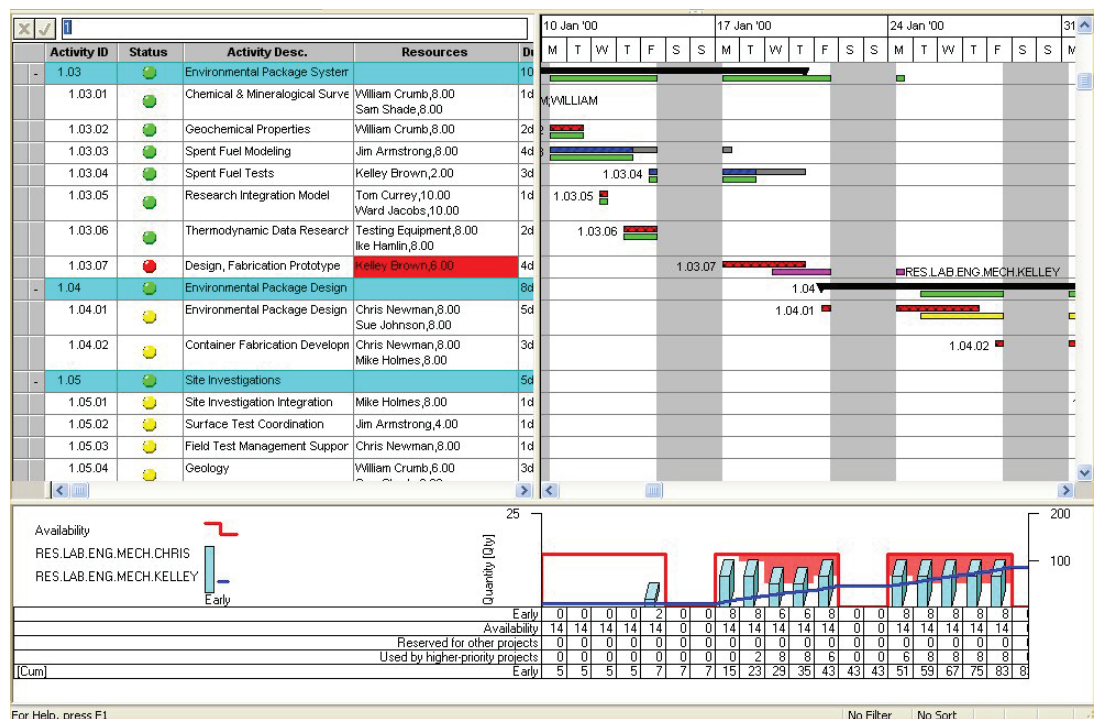


Figure 3: Resource Scheduling

**World Headquarters:**

**United States**

2291 Wood Oak Drive  
Herndon, VA 20171-2823  
800.456.2009

**Worldwide Locations:**

**Belgium**

+32 (0) 2 709 2191

**Denmark**

+45 35 27 79 00

**Germany**

Frankfurt am Main  
+49 6967733106

**The Netherlands**

+31 (0)20 347 3080

**Norway**

+47 22 01 38 00

**Sweden**

+46 (0)8 587 077 00

**United Kingdom**

London  
+44 (0)20 7518 5010

[deltek.com](http://deltek.com)

[info@deltek.com](mailto:info@deltek.com)

**System Requirements**

---

**Database support**

- Microsoft Access, Microsoft SQL Server 2005/2008, Oracle 10g/11g

**Platform Support**

- Microsoft Windows® Server 2003, Microsoft Windows® Server 2008
- Microsoft Windows® XP, Windows Vista, Windows 7
- Microsoft Windows® Terminal Services / Citrix®

Business managers, project managers and resource managers at project-focused businesses will greatly benefit from Open Plan's powerful enterprise planning and scheduling functionality.

For more information visit us online at [deltek.com/openplan](http://deltek.com/openplan)

Deltek is the leading global provider of enterprise software and information solutions for professional services firms and government contractors. For decades, we have delivered actionable insight that empowers our customers to unlock their business potential. 16,000 organizations and 2 million users in over 80 countries around the world rely on Deltek to research and identify opportunities, win new business, optimize resources, streamline operations, and deliver more profitable projects. Deltek – Know more. Do more.® [deltek.com](http://deltek.com)